

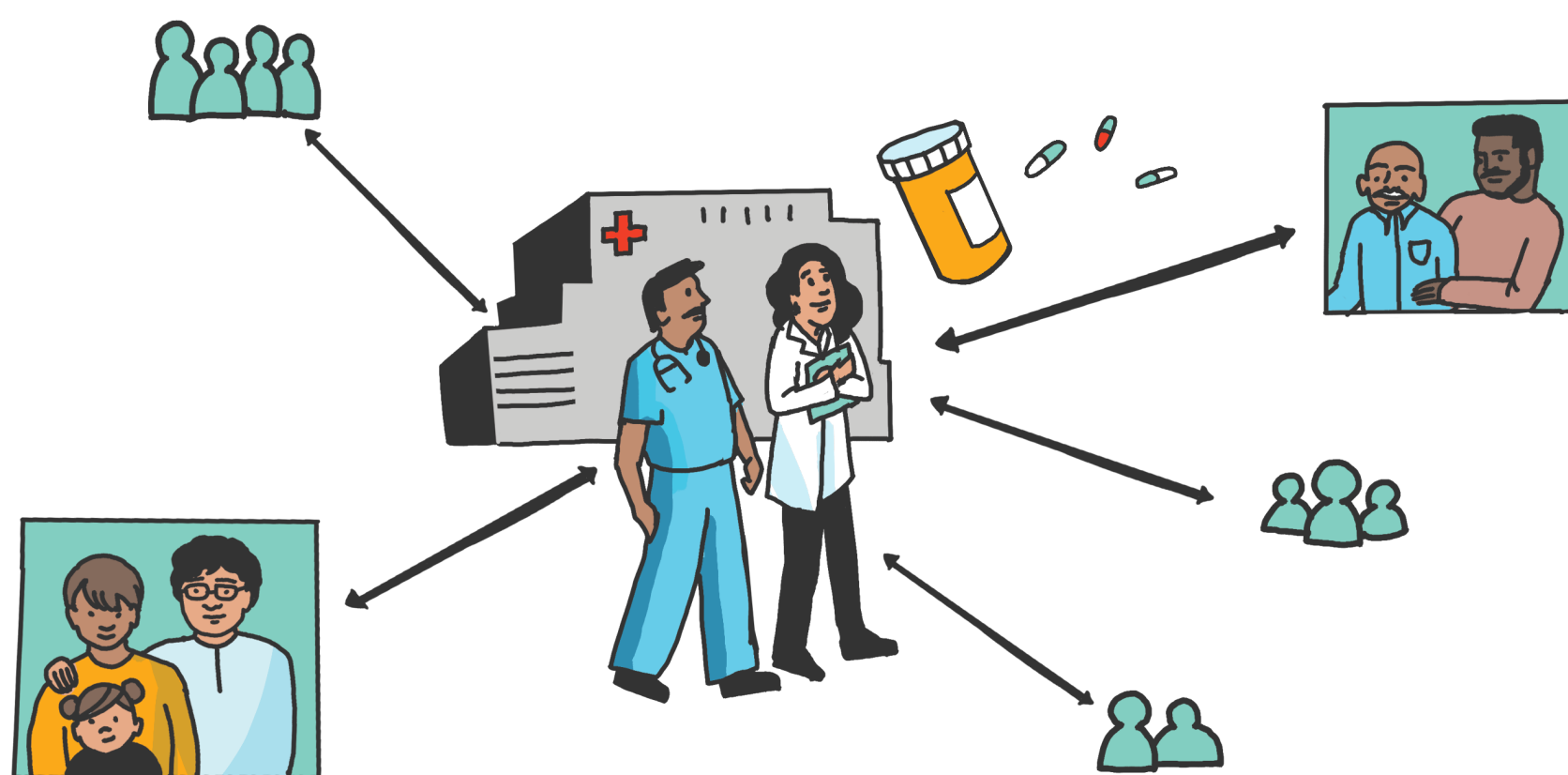
BACKGROUND

- » The needs of cancer patients affected by disasters are immediate, acute, and complex.
- » During the aftermath of a disaster, cancer patients may be displaced from their homes, livelihoods and care facilities. This can severely compromise their ability to adhere to prescribed treatment regimens.



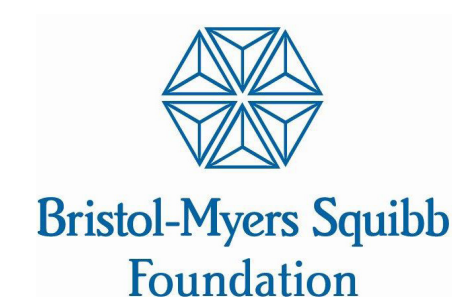
PROJECT GOALS

- » CancerCare will work with other preeminent oncology organizations to create a model system of communication and collaboration in the face of a disaster, in order to best help people with cancer and their loved ones.
- » A secondary goal is to provide a replicable program model for other organizations to similarly address the immediate needs of patients affected by other illnesses in the wake of a disaster.



Acknowledgments

This project was supported by grants from the Bristol-Myers Squibb Foundation, Inc. and the Merck Foundation.



WHAT WILL WE ACCOMPLISH IN PHASE I OF THIS PROJECT?

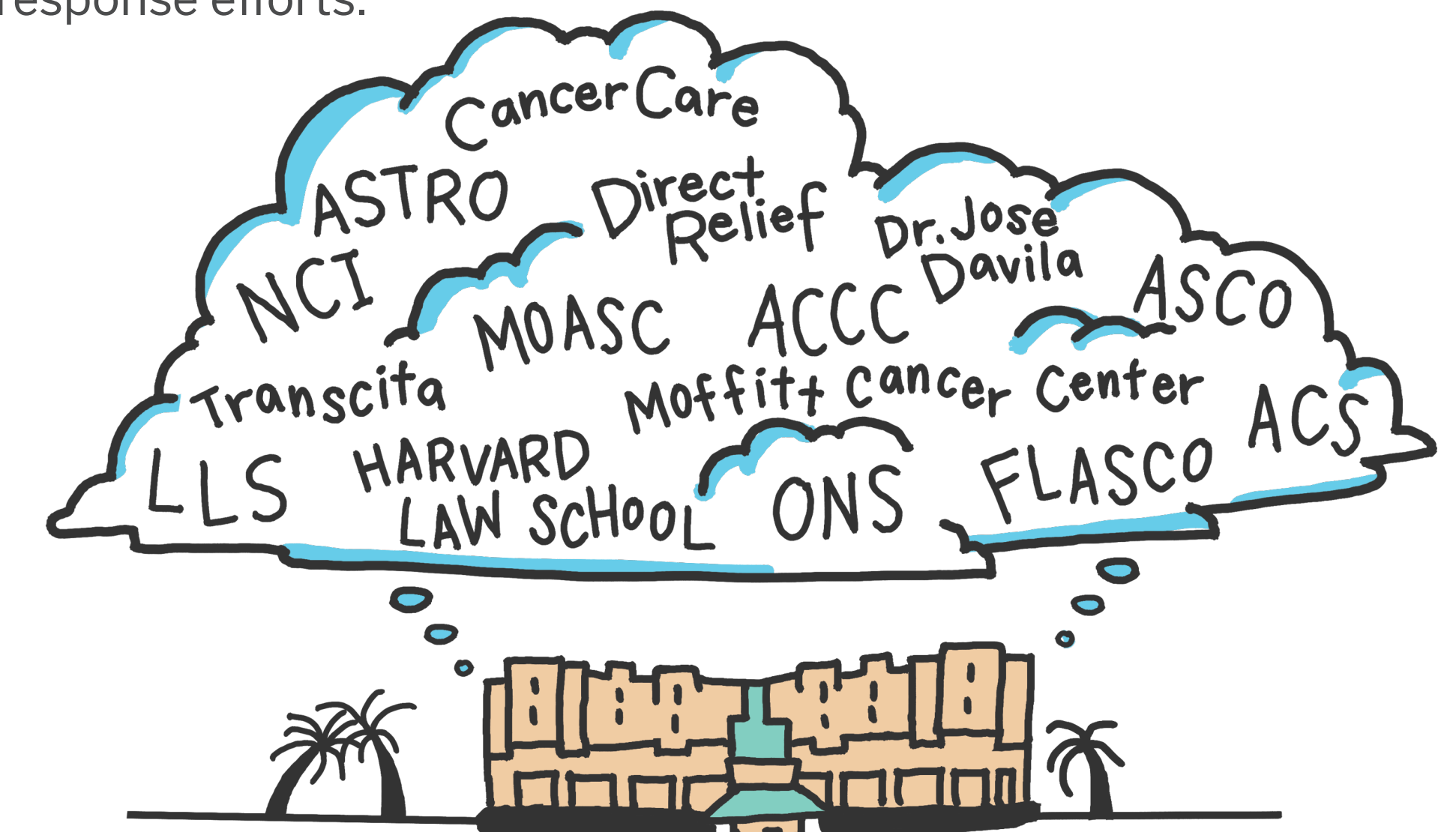
- » Interviews of professional oncology association executives, providers, and others with experience in the field of disasters.



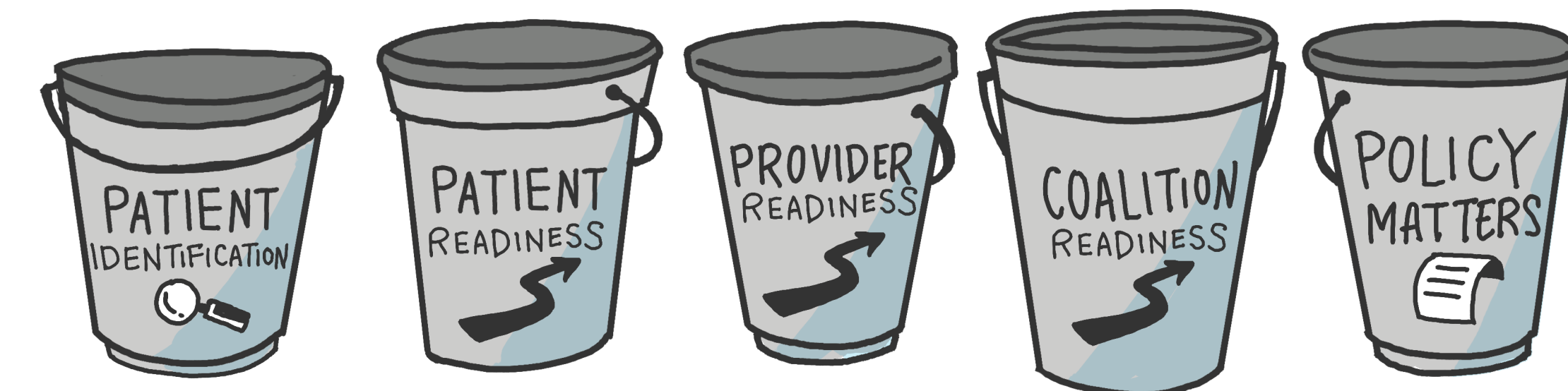
- » Engagement of a consultant with disaster expertise to assist with:
 - Evaluation of our past services
 - Research of other disaster relief initiatives and best practices
 - Design of surveys with patients who experienced disasters



- » Stakeholder meeting at the Moffitt Cancer Center in Tampa, Florida on May 15, 2019 with leaders from oncology and other preeminent organizations and individuals involved in disaster response efforts.



- » The stakeholder meeting will include round robin and other brainstorming sessions to help participants better understand the past, identify current challenges, and determine steps for the future related to the following disaster response issues that are particularly complex in the cancer world:



- » We envision a toolkit of provider and patient resources will result from our stakeholder meeting.

